

Embroiderers Guild of South Australia

Free Project

Designed by Jessica Liddle

Dishwasher Magnet

Materials:

Plastic canvas, large enough for your wool

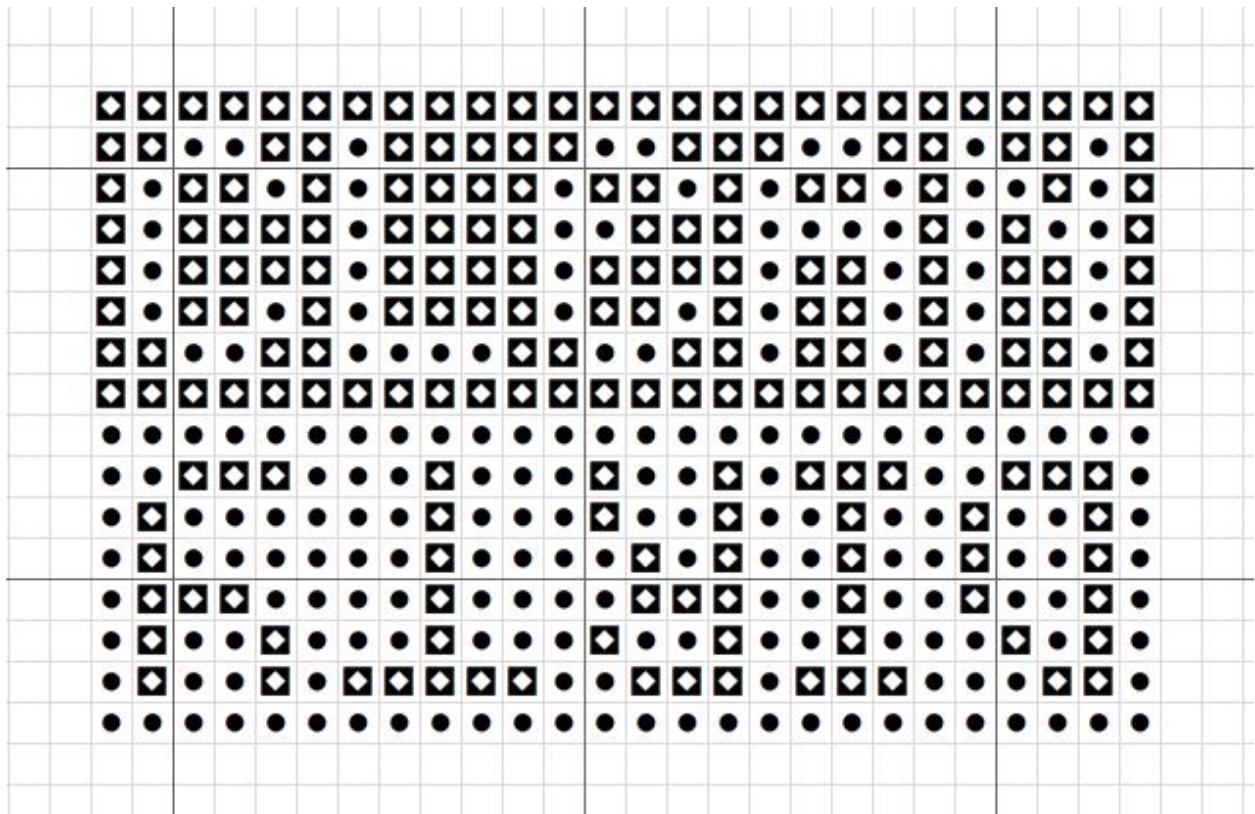
Blunt tapestry needle, large enough for your wool

Sharp needle, large enough for your wool

Two contrasting colours of tapestry wool, one skein each

A thin magnet, such as free advertising ones or purchase magnetic sheets from craft shops

Instructions:



Following the provided chart, use one strand of tapestry wool to cross stitch the design. The pattern is shown in black and white, simply use two contrasting colours of your choice. One colour will be one symbol and one colour will be the other.

How to cross stitch: <https://www.dmc.com/uk/p-cross-stitch-quick-start.html>

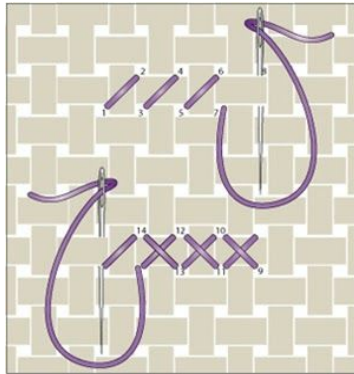


Image from DMC

Use the "waste knot" method to start off. Tie a knot in the end of the wool. Pass the needle FRONT to BACK leaving the knot on the FRONT of the work. Start your first cross stitch and stitch over the wool. When you get near the knot, snip it off and your stitching is secured.

Further instructions here <https://www.better-cross-stitch-patterns.com/waste-knot.html>

Use the sharp needle to secure the wool through the stitches at the back of the work.

Once finished, cut out the design leaving one square of plastic canvas around the edge.

Cut the magnet to fit the back of the finished piece. The final size will depend on the size of the plastic canvas.

Using craft glue or a hot glue gun, glue the magnet to the back of the piece.

Your magnet is ready to use! Simply flip it to show if the dishwasher is clean or dirty.